



WATERSTOP-RX® EXPANDING CONCRETE JOINT WATERSTOP

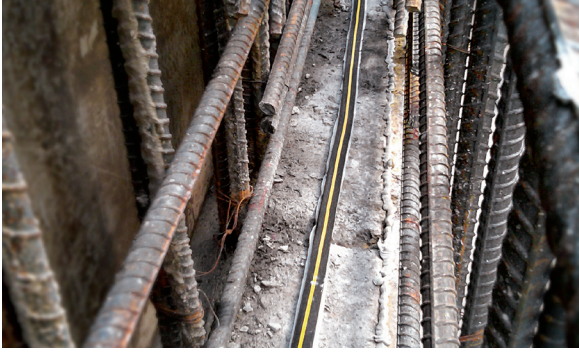
EXPANDING WATERSTOPS FOR CONCRETE CONSTRUCTION JOINTS

APPLICATIONS

Vertical and Horizontal
Nonmoving Concrete
Construction Joints
New to Existing Construction
Irregular surfaces
Around Through-wall
Penetrations, e.g., Plumbing
and Utility Pipes
Around Piles, I Beams,
Supports and Other Detailing
Applications

WATERSTOP-RX® is an expanding strip waterstop designed to stop water ingress through cast-in-place concrete construction joints. Upon contact with water, it expands to form a positive seal against the concrete. WATERSTOP-RX is designed to replace passive PVC/rubber dumbbell waterstops, thereby eliminating the requirement of special pieces, split-forming and seam welding.

WATERSTOP-RX offers a low-cost opportunity to enhance the performance of a sound external waterproofing system by sealing the areas experiencing the highest probability of water infiltration through the concrete, and should therefore be implemented as part of the waterproofing design.



Exceptional Waterproofing Performance:

Protection from Water Ingress:

- Proven effective on projects worldwide for more than 20 years.
- Can expand several times its volume to fill voids.
- Seals pipe penetrations that PVC waterstops cannot effectively seal.
- Ends naturally join together to form one continuous waterstop.
- Proven effective in structures under continuous or intermittent hydrostatic pressure.

Installation Benefits and Features:

Fast and Easy:

- Manufactured in lightweight, flexible coils.
- Can be easily installed by a single worker.
- Requires no special pieces, seam welding or split forming.

Versatility:

- Can be adhered in place using CETSEAL™ or mechanically secured with REVO-FIX and fasteners.
- Pliability allows installation around through-wall/slab and pipe penetrations.
- Easily transitions from horizontal to vertical applications to form a continuous waterstop.
- Available in multiple sizes for differing construction environments and conditions.